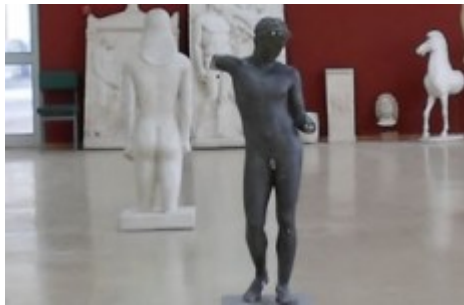


Museum of Casts

39.670414, 20.862739

39.67064465, 20.8622426327693



The Casts Museum belongs to the Department of Archeology of the Department of History and Archeology of the School of Philosophy (PD 89 / 3.2.1977) and is located on the ground floor of the building next to the Dakar Amphitheater. The first collection of copies of representative samples of ancient Greek sculpture was created in 1967. The collections sculptures are precise copies of archaic, classical and Hellenistic times from the National Archaeological Museum, the Acropolis Museum and the Kerameikos Museum. In addition to copies of sculpture works, the Collection also includes original archaeological objects, representative of the pottery and small craft categories, where construction material, clay, or stone for the category of tools are of particular importance. The collection also contains fragmentary preserved, shells, representing specific categories of pottery from the Mycenaean period to the late Hellenistic period. In the course of seminar-tutoring courses, students practice the methods of approaching the form of monuments through precise copies (description, identification, study, etc.), while having direct contact with the material of ancient objects, practicing , cataloging, study and dating of original archaeological material, archaeological photography and drawing.

Overview

Country:Greece

Other senses involved

✓ Sight

✓ Touch

Accessibility / Transportation

✓ Highway Network-Car 1 ✓ Intercity/Tourist Bus 1 ✓ Trails and hiking roads 1

